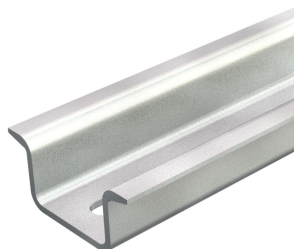


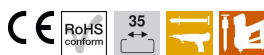
Technical data sheet

Hat profile rail, perforated GTP

Item number: 1115456



Hat profile rail 35 x 15 mm similar to DIN EN 60715 (formerly DIN EN 50022), but with material thickness 1.5 mm.



St Steel

GTP Electrogalvanized, transparently passivated

Master data

Item number	1115456
Type	2069 15 1.5 GTPL
Description 1	Top hat rail
Description 2	perforated, 1.5 mm thick
Manufacturer	OBO
Dimension	2000x35x15
Material	Steel
Surface	Electrogalvanized, transparently passivated
Surface standard	
Smallest sales unit	2
Unit of quantity	Metre
Weight	64 kg
Weight unit	kg/100 m

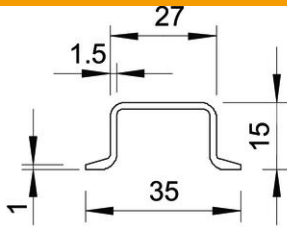
Technical data sheet

Hat profile rail, perforated GTP

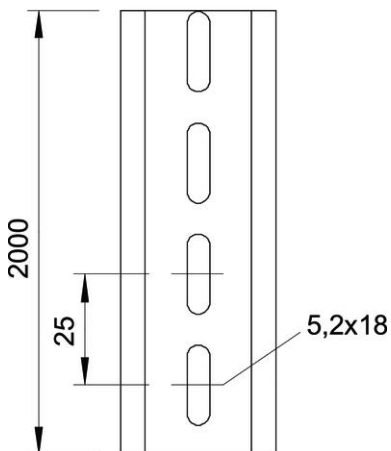
Item number: 1115456



Dimensions



Length	2,000 mm
Width	35 mm
Height	15 mm



Technical data

Version for	Perforated
Version, rails	Support rail DIN EN 60715
Drill hole spacing, centre	25 mm
Bundle	20 m
Hole shape (ETIM)	Long slot
Material thickness	1.5 mm