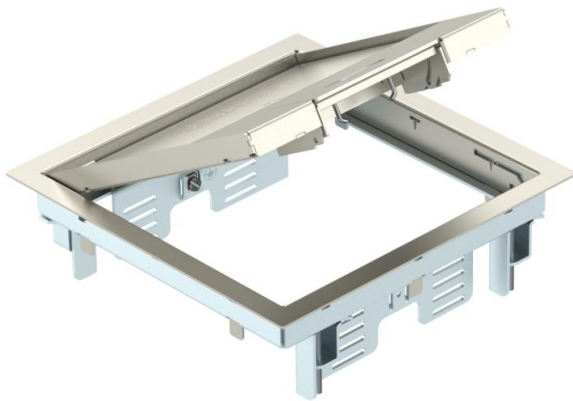


Technical data sheet

GES4M-2 service outlet with handle clamp

Item number: 7405191



Service outlet with handle clamp for up to 6 individual Modul 45 devices in 2 UT3 universal supports, use in duct systems and system floors for indoor use.

Locking ladder made of galvanised sheet steel. The floor covering thickness is set to 5 mm, adjustable to 10 mm if necessary.

Up to 4 installation devices with 50 mm central plate can be inserted.

Service outlet with handle clamp, 2-compartment, for the installation of MT4 mounting support. Two type APMT2 cover plates can be installed.



A2 Stainless steel

Master data

Item number	7405191
Type	GES4M-2 10U
Description 1	Service outlet
Description 2	for universal mounting
Manufacturer	OBO
Dimension	223x223x70
Material	Stainless steel
Smallest sales unit	1
Unit of quantity	Piece
Weight	260 kg
Weight unit	kg/100 pc.

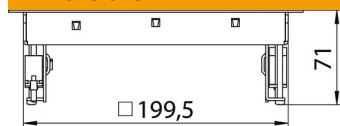
Technical data sheet

GES4M-2 service outlet with handle clamp

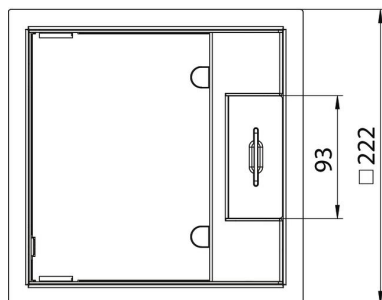
Item number: 7405191



Dimensions



Length	222 mm
Width	222 mm



Technical data

Number of installable devices	6
Number of mounting boxes	2
Version for	Square
Cable outlet version	Swivellable cord outlet
Floor covering protection frame	yes
Floor care	Dry
Seal installation option	no
Floor height, min.	78 mm
Suitable for raised floor installation	yes
Suitable for screed-flush closed underfloor ducts	no
Suitable for screed-covered underfloor ducts	yes
Suitable for cavity floor installation	yes
Suitable for wet care	no
Suitable for underfloor box	250/350
Suitable for underfloor ducts	yes
Device support to accept mounting boxes	yes
Length of external dimensions	222 mm
Length of installation dimensions	201 mm
With floor covering recess	yes
Nominal size for device installation units	4
Frame version	Carpet protection frame
Protection rating (IP) when used	IP20
Protection rating (IP) when unused	IP40
Protection rating IK code	IK10
Heavy-duty version	no
Installation system type	MT3 / GB2
Vertical load, large area	to 5,000 N
Vertical load, small area	to 3,000 N

Technical data sheet

GES4M-2 service outlet with handle clamp

Item number: 7405191



Technical data

Approvals	VDE
Opening mechanism	Handle
Floor covering thickness	5 mm