

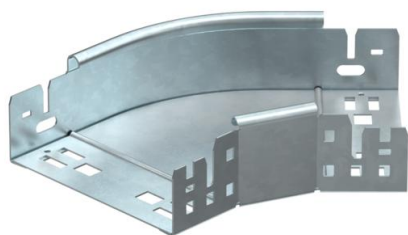
# Technical data sheet

45° Magic bend 60 FT

Item number: 6041062



45° bend with quick connector system. For all cable tray types of 60 mm side height.



**St** Steel

**FT** Hot-dip galvanised

## Master data

Item number	6041062
Type	RBM 45 615 FT
Description 1	45° bend
Description 2	with quick connector
Manufacturer	OBO
Dimension	60x150
Material	Steel
Surface	Hot-dip galvanised
Surface standard	DIN EN ISO 1461
Smallest sales unit	1
Unit of quantity	Piece
Weight	72.2 kg
Weight unit	kg/100 pc.

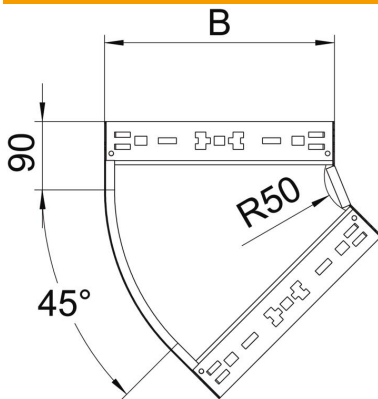
# Technical data sheet

45° Magic bend 60 FT

Item number: 6041062



## Dimensions



Width	150 mm
Width	6 in
Height	60 mm
Height	2 in
Plate thickness	1.25 mm
Dimension B	150 mm

## Technical data

Bend (angle)	45°
Connector version	Integrated connector
Maintain electrical functions	yes
Mounting perforation in base	no
NATO hole pattern	no
Change of direction	Horizontal
Rustproof steel, pickled	no
Side perforation	no
Wide-span version	no
Type of connector, cable support system	Click fastening