

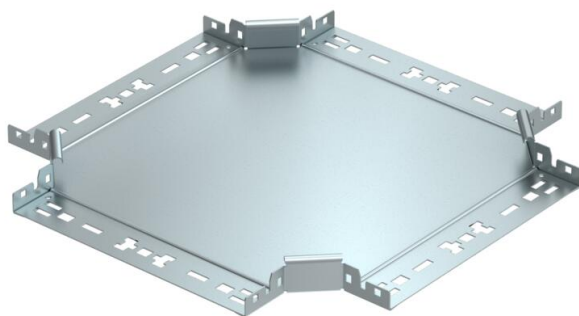
# Technical data sheet

## Cross-over Magic 35 FS

Item number: 7027245



Cross-over with quick connector system. For all cable tray types of 35 mm side height.



**St** Steel

**FS** Strip galvanized

### Master data

Item number	7027245
Type	RKM 330 FS
Description 1	Cross over
Description 2	with quick connector
Manufacturer	OBO
Dimension	35x300
Material	Steel
Surface	Strip galvanized
Surface standard	DIN EN 10346
Smallest sales unit	1
Unit of quantity	Piece
Weight	231.2 kg
Weight unit	kg/100 pc.

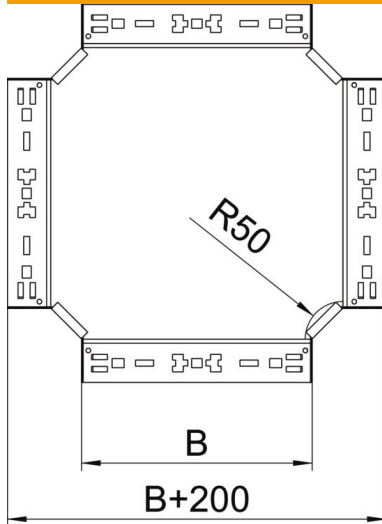
# Technical data sheet

## Cross-over Magic 35 FS

Item number: 7027245



### Dimensions



Width	300 mm
Width	12 in
Height	35 mm
Height	1 in
Plate thickness	1.25 mm
Dimension B	300 mm

### Technical data

Bend (angle)	90°
Connector version	Integrated connector
Maintain electrical functions	no
Material thickness, floor plate	1.25 mm
NATO hole pattern	no
Change of direction	Horizontal
Rustproof steel, pickled	no
Wide-span version	no
Type of connector, cable support system	Click fastening
Rail thickness	1.25 mm