



# Hospitality products

For architects and designers



# UDHOME2 floor socket

Small but perfect

The UDHOME2 floor socket is available with a decorative cover and floor covering recess in stainless steel or brass. With its protection rating of IP45, the UDHOME2 floor socket with tube body and stainless steel cover is even suitable for use in wet-cleaned floors.



## Cover and cord outlet

The larger cord outlet for optimal cable exits can now be opened easily using the handle.  
The cover closes with a gentle click and can be used flexibly in all directions.





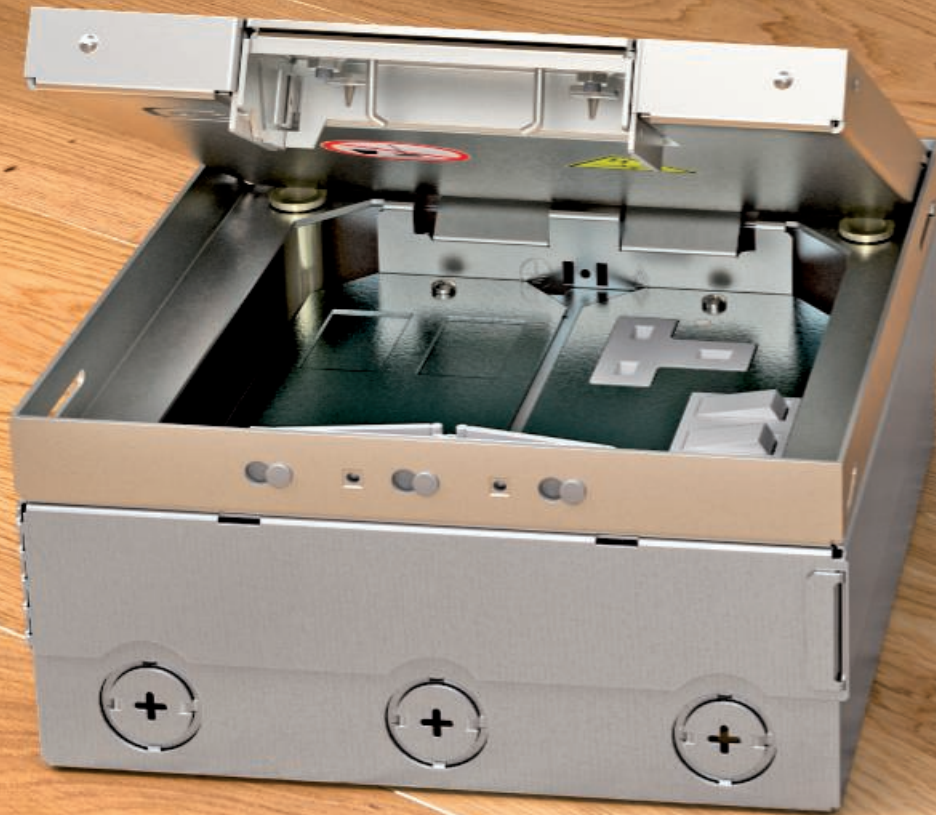
## Device installation

The scope of delivery contains one BS socket with switch and one LJ6C data module.



# The UDHOME4 floor box

For a wide range of equipment



## Device installation

The UDHOME4 can be flexibly equipped with power, data and multimedia devices via two APMT2 mounting plates for BS installations.





## Height adjustment

The UDHOME has a height-adjustment range of up to 30 mm and can thus be adjusted to the level of the finished floor.



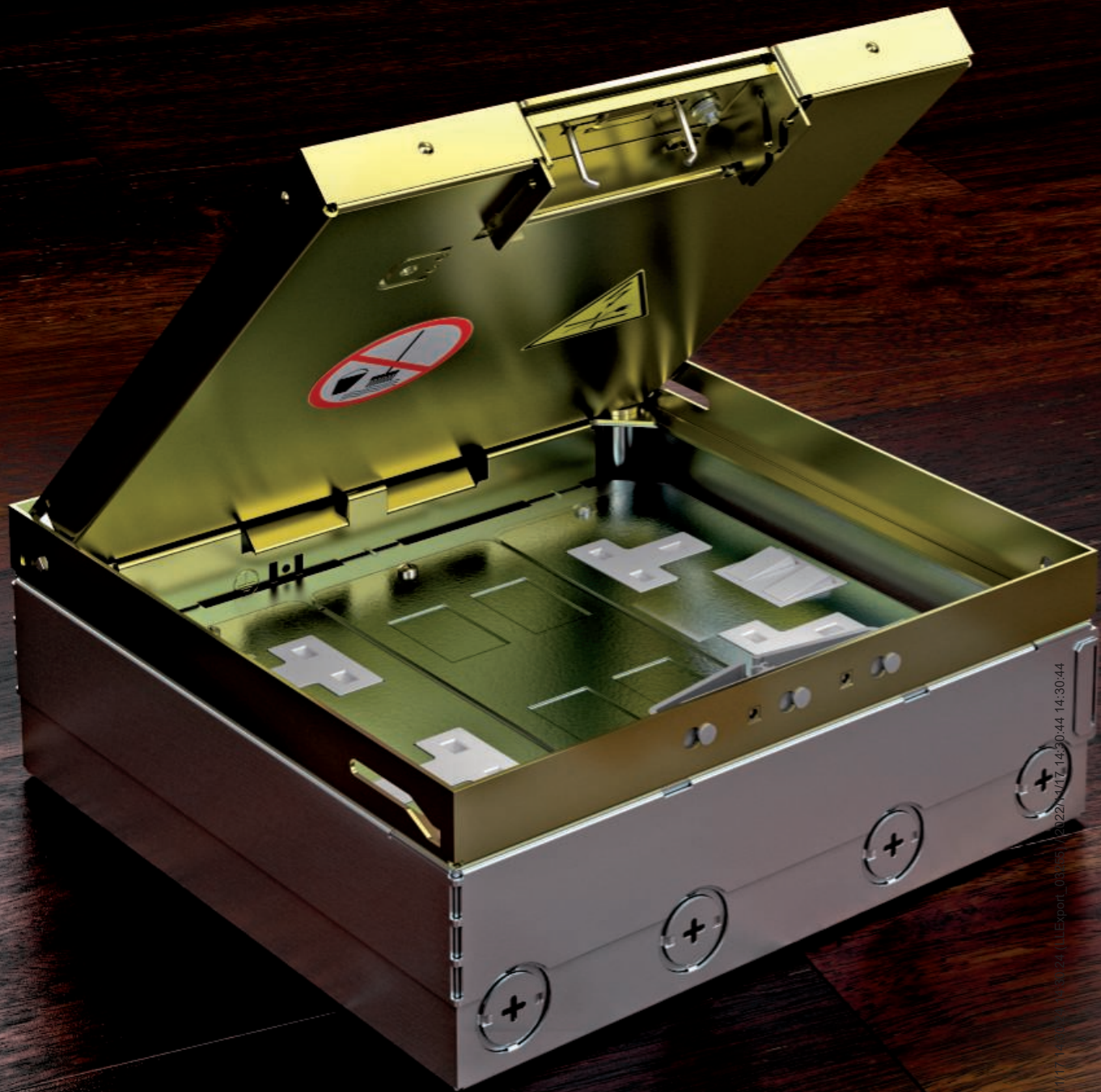
## Design

The UDHOME4 can fit neatly into high-quality interior architecture. All you can see is a slender metal edge and the cord outlet. The floor box is available in stainless steel or brass versions.



# The UDHOME9 floor box

A beautiful figure with powerful connections



## Device installation

Via three APMT5 mounting plates for BS installations, the UDHOME9 can be flexibly equipped with power, data and multimedia devices.



A square floor box with a brass-colored frame is installed on a dark wood floor. Two black cables are connected to the box. The box is shown in two states: one where it is open, revealing the internal wiring, and another where it is closed, blending with the floor. The background is a dark wood floor with a diagonal grain pattern. A decorative graphic of parallel lines is visible in the top right corner.

## Changeable

The UDHOME9 is available in stainless steel and brass versions.

## Installed

The UDHOME9 is the largest floor box of the UDHOME family. It combines restrained design with a wide range of use options.



The GES R2 floor socket with hinged cover stands out through its fine design. It is the perfect solution for high-quality floor coverings, which are dry or wet-cleaned.

### Hinged cover

The locking function of the hinged cover allows a secure outlet for the cable routing. When closed, the floor socket is even suitable for wet cleaning.







## Surfaces

The version with hinged cover is available in the colours nickel, old brass, chromium and old copper.





## A great package. The foldable DBK Deskbox

At workplaces or conference tables – the range of applications of the foldable DBK Deskbox is huge. No matter whether for laptops, beamers or PCs, connection is as easy as you'd expect. Open the cover, put the plug in, then close the cover. The integrated brush bar allows the tidy running out of the cables.





# Deskbox DB: Good and flexible

## Versatile

The DB Deskboxes allow comfortable and easy access to all connection devices directly at the workplace.

A large selection of pre-equipped and ready-for-connection Deskboxes are available.

The erectable type DB Deskbox offers the highest level of flexibility in positioning and fastening at the workplace.

Fastening clamps allow quick and easy mounting of the Deskboxes to the tabletop, with the benefit being that there is no damage to the tabletop, e.g. from fastening holes or through wood screws.



## A great package. The foldable DBK Deskbox

If necessary, the DBK Deskbox is simply folded up – using the push-to-open function: The connection devices are then easily accessible.



The inserted cables are run out of the closed Deskbox via the integrated brush bars.

They offer the right connection solutions for all areas of application: 1–2 circuits, network connections and multimedia connections for TVs and beamers for meeting rooms are available.



## Deskbox DB: Beautifully flexible

The aluminium housings of the DB Deskboxes with silver, anodised surfaces stand out through their compact structure and discreet design.

The type DB Deskboxes have a width of between 179 mm and 209 mm.



Item no.:  
6116906



Item no.:  
6116907



Item no.:  
6116908

## Deskbox DBK2: Beautifully foldable

### Device installation widths

The DBK Deskbox is available in four widths. This results in the following device installation widths for equipment:

- 150 mm
- 200 mm
- 250 mm
- 300 mm

### Surface variants

The DBK Deskbox is supplied as standard with the brushed stainless steel surface. The following variants are available on request:

- Painted black
- Pure white lacquered



Item no.:  
6116848



Item no.:  
6116847



Item no.:  
6116802





Discover the variety of  
our Rapid 45-2  
Device installation ducts  
and trunking







# Elegant design: Rapid 45-2 aluminium

Adds value to any office environment: The Rapid 45 in aluminium stands out through its fine appearance.

## Fittings

Fixed and variable fittings, such as internal corners, external corners and T pieces, make installations perfect.



## Range of variants

With their anodised or pure white powder-coated surface, aluminium Rapid 45-2 device installation trunking can bring elegance to the workplace. Special colours can also be implemented on request. Three trunking widths are available.

- Anodised
- RAL 9010 pure white

### Available dimensions (trunking height x trunking width)

53 x 100 mm, one-compartment  
53 x 130 mm, two-compartment  
53 x 165 mm, two-compartment





## Innovative cover

The new cover consists of a PVC base profile and an aluminium panel profile.

It does not need to be included in the protective measure. Mounting and dismantling are very simple.



## Anodised surface

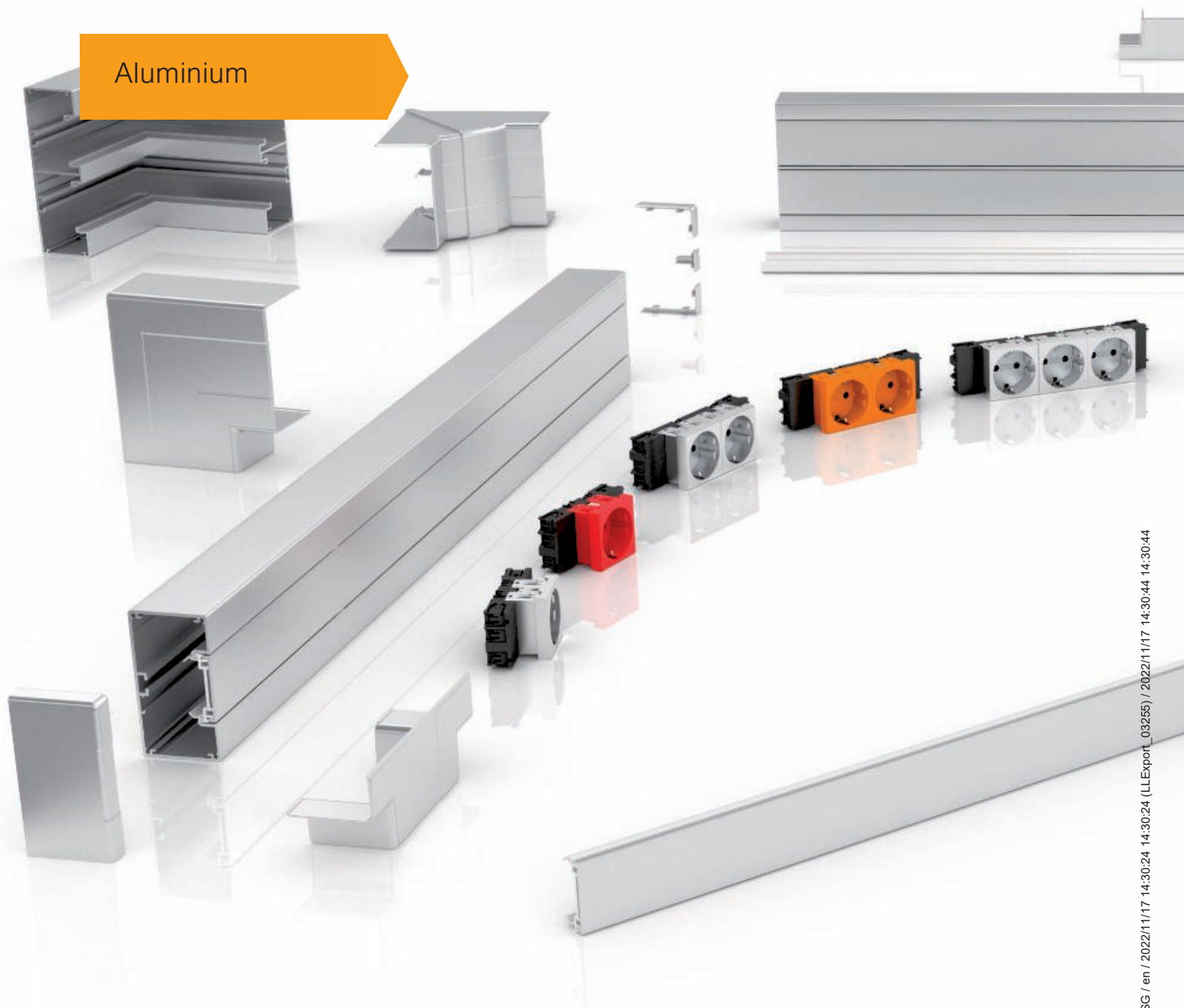
During anodisation, metal surfaces are electrically oxidised. This creates an extremely hard, scratch-resistant surface. Compared to other treatment methods, no outside material is used. The metallic character of the aluminium remains intact. In addition, the method offers reliable protection against corrosion.



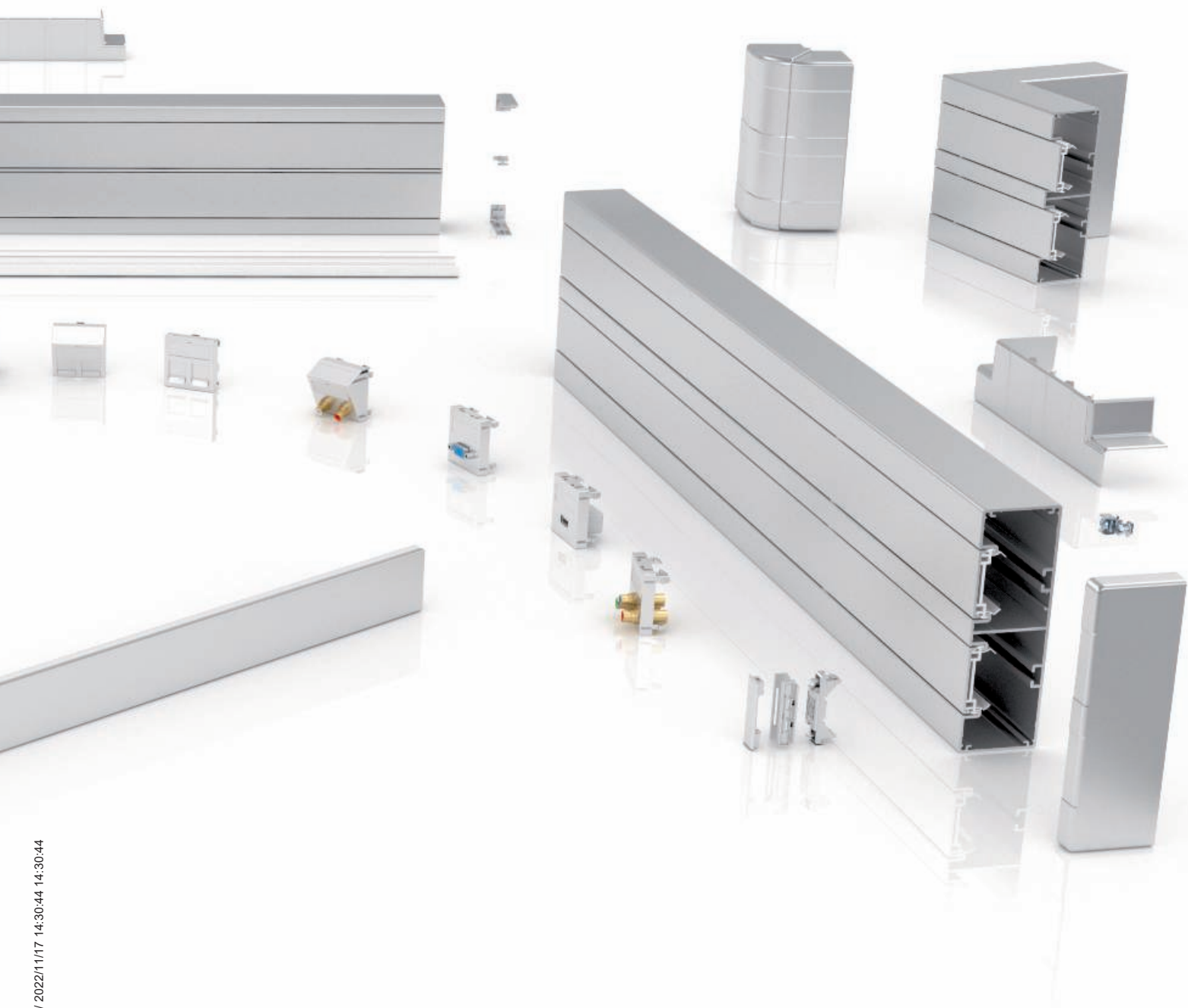
# Quality in every element.

The Rapid 45-2 in anodised aluminium is always an elegant solution for offices and administrative areas. A very high level of quality can be seen in all the system details.

## Aluminium









# Service pole, type 45

Ready for anything

## Clamping device

The service poles are fixed between floor and ceiling using a clamping device.

## More flexibility

Poles with a floor plate and flexible hose to the ceiling can be moved in a specific radius and can thus be adapted to meet changing requirements. All kinds of devices can be mounted using OBO's own Modul 45 series.







#### Mounting of the service pole

With these ISS service poles, fastening takes place on the floor. The cables are run to the pole through the underfloor system or cable protection pipes.

A profile, which can be fitted on both sides, is available for more flexibility during installation. The profile is equipped with a 45 mm system opening. In this way, the devices of the Modul 45 series can be integrated directly into the pole profile.



# Floor to ceiling service poles



## **ISS70110ST... floor to ceiling service pole**

- Made of sheet steel
- Simple clamping device
- Cover made of either PVC or sheet steel

## **ISST70140B... floor to ceiling service pole**

- Made of aluminium
- Two pipe profiles running in parallel, with 1,000 mm installation area

## **ISSOG70140... floor to ceiling service pole**

- Made of closed oval aluminium profile

## **ISS70110..., ISS140110... floor to ceiling service pole**

- 1 or 2-compartment
- Aluminium profile corresponds to the GA70110... device installation trunking





**ISS130130... floor to ceiling service pole**

- 2-compartment ISS with 80 mm system opening
- Square design
- Clamping device can be used up to 1,500 mm over pole body

**ISSRM45.... floor to ceiling service pole**

- 1-compartment
- Slender, round aluminium profile with 70 mm diameter
- 45 mm system opening for direct installation of Modul 45 devices

**ISSDM45.... floor to ceiling service pole**

- 2-compartment
- Slightly oval-shaped aluminium profile with 2 opposing 45 mm system openings

**ISS110100..., ISS140100.... floor to ceiling service pole**

- 2-part aluminium pipe profile with 80 mm diameter
- 1 or 2 780 mm-high extension tanks with an 80 mm system opening for device installation



Flexkanal

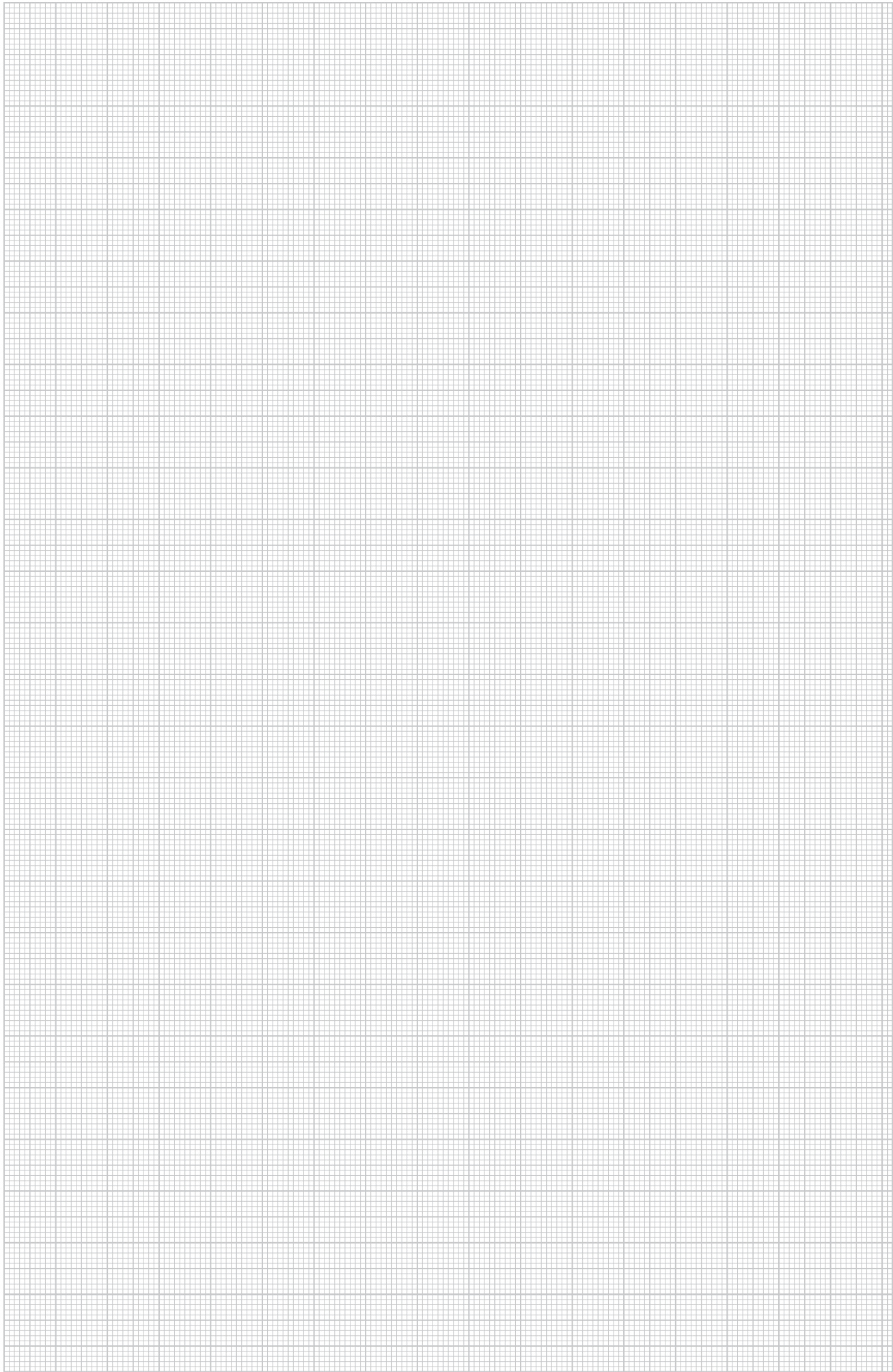


Type	Length mm	Colour	Pack m	Weight kg/100 m	Item no.
FLK-2K LGR	1000	Light grey	1	28.800	6154922
FLK-2K SWGR	1000	Black-grey	1	28.800	6154930

The Flexkanal runs your cables ordered and protected to the desk. It connects the Deskbox with the dado trunking or with the floor connection box. When extended, the Flexkanal is 1,000 mm long, 60 mm wide and 20 mm high.

The trunking consists of two chambers, capacity per chamber:  
two cables of 8.5 mm diameter or three cables of 7.5 mm diameter or  
four cables of 7.0 mm diameter or five cables of 6.0 mm diameter.

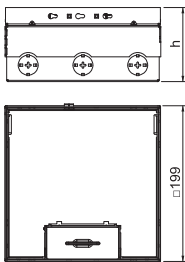
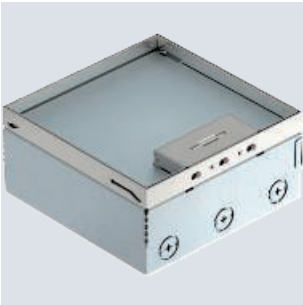






UDHOME floor boxes, stainless steel

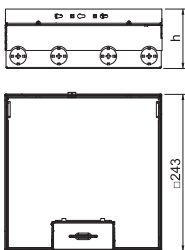
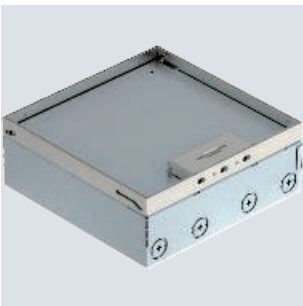
UDHOME4 floor box, freely equippable, stainless steel



Type	Dim. h mm	Floor height mm	Floor covering thickness mm	Pack Piece	Weight kg/100 pc.	Item no.
UDHOME4 2V	95	95-125	15	1	384.000	7427232

Square floor box for use in dry-cleaned cavity and screed floors in indoor areas. Installation housing with pre-marked insertion openings for pipes (M25). Cover adjustable to top edge of floor covering using four height-adjustment supports. The minimum installation depth is 95 mm, the height-adjustment range + 30 mm.  
Surfaces visible in the floor covering made of stainless steel.

UDHOME9 floor box, freely equippable, stainless steel

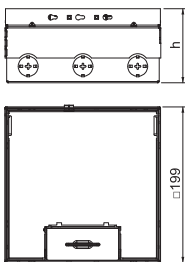
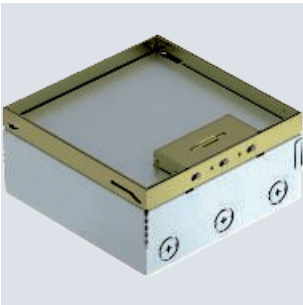


Type	Dim. h mm	Floor height mm	Floor covering thickness mm	Pack Piece	Weight kg/100 pc.	Item no.
UDHOME9 2V	95	95-125	15	1	470.000	7427234

Square floor box for use in dry-cleaned cavity and screed floors for indoor use. Installation housing with pre-marked insertion openings for pipelines (M25). Cover adjustable to the top edge of the floor covering using four height-adjustment supports. The minimum installation depth is 95 mm, the height-adjustment range + 30 mm.  
Surfaces visible in the floor covering made of stainless steel.

UDHOME floor boxes, brass

UDHOME4 floor box, freely equippable, brass



Type	Dim. h mm	Floor height mm	Floor covering thickness mm	Pack Piece	Weight kg/100 pc.	Item no.
UDHOME4 2M	95	95-125	15	1	344.800	7427236

Square floor box for use in dry-cleaned cavity and screed floors for indoor use. Installation housing with pre-marked insertion openings for pipelines (M25). Cover adjustable to the top edge of the floor covering using four height-adjustment supports. The minimum installation depth is 95 mm, the height-adjustment range + 30 mm.  
Surfaces visible in the floor covering made of brass.

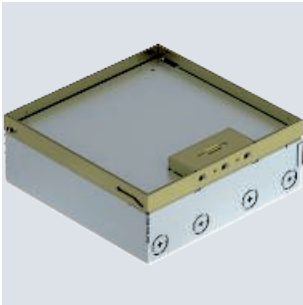
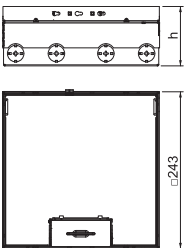
CuZn  
37



UDHOME9 floor box, freely equippable, brass

Type	Dim. h mm	Floor height mm	Floor covering thickness mm	Pack Piece	Weight kg/100 pc.	Item no.
UDHOME9 2M	95	95-125	15	1	482.000	7427328

Square floor box for use in dry-cleaned cavity and screed floors for indoor use. Installation housing with pre-marked insertion openings for pipelines (M25). Cover adjustable to the top edge of the floor covering using four height-adjustment supports. The minimum installation depth is 95 mm, the height-adjustment range + 30 mm.  
Surfaces visible in the floor covering made of brass.



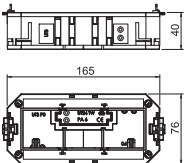
Universal support

PA

UT3 universal support, with cover plate for Modul 45® de-  
vices, system length 165 mm

Type	Length mm	Width mm	Height mm	Pack Piece	Weight kg/100 pc.	Item no.
UT3 45 3	165	76	40	1	10.600	7408723

Universal support with two strain reliefs, mounting bridges, partition and cover plate UT3 P3 for the installation of 3 Modul 45 devices in device installation units of the nominal sizes 2, R4, 4 and R7.

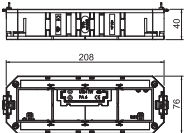


PA

UT4 universal support, with cover plate for Modul 45® de-  
vices, system length 208 mm

Type	Length mm	Width mm	Height mm	Pack Piece	Weight kg/100 pc.	Item no.
UT4 45 4	208	76	40	1	13.500	7408727

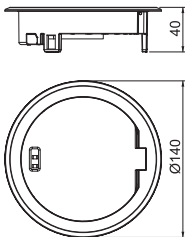
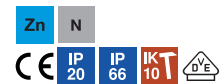
Universal support with two strain reliefs, mounting bridges, partition and UT4 P4 cover plate for installation of 4 Modul 45 devices in device installation units of nominal sizes R7, R9 and 9.  
Universal support with two strain reliefs, partition and UT 4 P4 cover plate for installation of 4 Modul 45 devices in OKB IT device supports.





GES R2 floor socket with locking slider

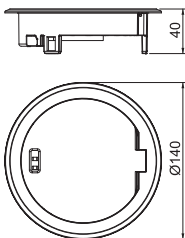
Service outlet with hinged cover and locking slider, GES R2, nickel



Type	Pack Piece	Weight kg/100 pc.	Item no.
GES R2 Ni	1	58.500	7408850

Service outlet with hinged cover and locking slider for GES R2 floor socket for direct installation in the MT R2 installation socket.  
When closed, the floor socket can be wet-cleaned.

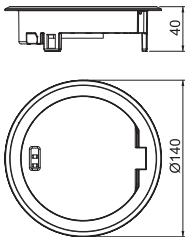
Service outlet with hinged cover and locking slider, GES R2, old brass



Type	Pack Piece	Weight kg/100 pc.	Item no.
GES R2 CuZn	1	58.500	7408852

Service outlet with hinged cover and locking slider for GES R2 floor socket for direct installation in the MT R2 installation socket.  
When closed, the floor socket can be wet-cleaned.

Service outlet with hinged cover and locking slider, GES R2, old copper



Type	Pack Piece	Weight kg/100 pc.	Item no.
GES R2 Cu	1	58.500	7408854

Service outlet with hinged cover and locking slider for GES R2 floor socket for direct installation in the MT R2 installation socket.  
When closed, the floor socket can be wet-cleaned.

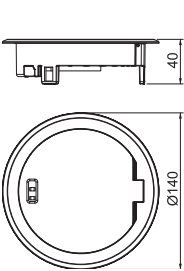
Zn



Service outlet with hinged cover and locking slider, GES R2, chrome

Type	Pack Piece	Weight kg/100 pc.	Item no.
GES R2 Cr	1	58.500	7408856

Service outlet with hinged cover and locking slider for GES R2 floor socket for direct installation in the MT R2 installation socket.  
When closed, the floor socket can be wet-cleaned.



Installation sockets

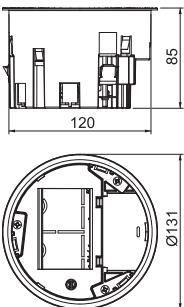
PA



Installation socket, 1.5 empty

Type	Installation depth mm	Installation diameter	Pack Piece	Weight kg/100 pc.	Item no.
MT R2 1.5	85	122	1	19.500	7408836

Installation socket for GES R2 floor socket for mounting in UD GES R2 screed socket and in raised floor plates with an installation opening diameter of 122 mm.  
Included in the delivery is a cover plate for the installation of 1.5x Modul 45 sockets (BS, SA).  
Up to two modular data sockets (Keystones) can be installed with optional mounting plate.



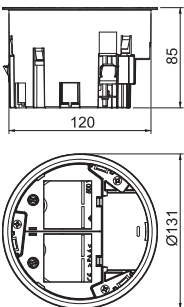
PA



Installation socket, 1+1 empty

Type	Installation depth mm	Installation diameter	Pack Piece	Weight kg/100 pc.	Item no.
MT R2 1-1	85	122	1	19.800	7408838

Installation socket for GES R2 floor socket for mounting in UD GES R2 screed box and in raised floor plates with an installation opening diameter of 122 mm.  
The scope of supply contains a partition and two cover plates for the installation of individual Modul 45 devices. Up to two modular data sockets (Keystones) can be installed with optional mounting plate.



Mounting plates

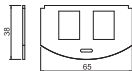
VA



Mounting plate for data technology, type A

Type	Pack Piece	Weight kg/100 pc.	Item no.
MP R2 2A	1	1.960	7408802

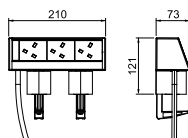
Mounting plate to accept two data connection modules of the following types: AMP TYCO: Standard 110Connect, SL Series 110Connect and Toolless, AMP-Twist; Brand-Rex: unshielded; GG45; TKM RJ MOD; Nexans: LAN-mark with Adapter-Clip; Siemon CAT6; 3M K6 and K10.  
Dimensions of a mounting opening in mm: 20.10 x 14.80.





## Deskbox DB, with fastening clamp, 3 BS sockets

Alu



Type	Version	Pack Piece	Weight kg/100 pc.	Item no.
DB-1 BS3 SEA1	Housing, silver anodised	1	150.000	6116901

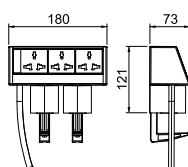
The Deskboxes can be mounted simply on a tabletop with 2 fastening vices, without damaging the tabletop. Mounting is possible on a tabletop with a thickness of 8 to 40 mm.

The DB Deskbox ensures a direct supply of the workplace with power, data and multimedia technology and is suitable for fixed attachment to a tabletop. The Deskbox is equipped with a connection cable, which runs out of the profile from below. The housing consists of an anodised, silver-coloured aluminium profile.

The Deskbox is equipped with three black British Standard sockets, which are equipped with a 3 m power cable with wire end sleeves at the end of the cable.

## Deskbox DB, with fastening clamp, 3 MS sockets

Alu



Type	Version	Pack Piece	Weight kg/100 pc.	Item no.
DB-1 MS3 SEA1	Housing, silver anodised	1	150.000	6116902

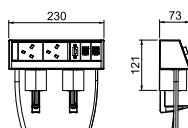
The Deskboxes can be mounted simply on a tabletop with 2 fastening vices, without damaging the tabletop. Mounting is possible on a table top with a thickness of 8 to 40 mm.

The DB Deskbox ensures a direct supply of the workplace with power, data and multimedia technology and is suitable for fixed attachment to a tabletop. The Deskbox is equipped with a connection cable, which runs out of the profile from below. The housing consists of an anodised, silver-coloured aluminium profile.

The Deskbox is equipped with three black British Multistandard sockets, which are equipped with a 3 m power cable with wire end sleeves at the end of the cable.

## Deskbox DB, with fastening clamp, 2 BS sockets, 2 x RJ45 Cat. 6, 1 x HDMI

Alu



Type	Version	Pack Piece	Weight kg/100 pc.	Item no.
DB-MH1 BS2 SEA1	Housing, silver anodised	1	150.000	6116903

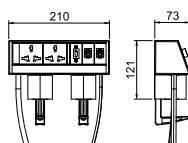
The Deskboxes can be mounted simply on a tabletop with 2 fastening vices, without damaging the table top. Mounting is possible on a tabletop with a thickness of 8 to 40 mm.

The DB Deskbox ensures a direct supply of the workplace with power, data and multimedia technology and is suitable for fixed attachment to a tabletop. The Deskbox is equipped with a connection cable, which runs out of the profile from below. The housing consists of an anodised, silver-coloured aluminium profile.

The Deskbox is equipped with two black British Standard sockets, which are equipped with a 3 m power cable with wire end sleeves at the end of the cable. In addition, one HDMI connection (HDMI 1.4 with a 3 m connection cable with HDMI connector) and two data technology modules (RJ45 to RJ45, switched 1:1, Cat. 6 shielded) are mounted.

## Deskbox DB, with fastening clamp, 2 MS sockets, 2 x RJ45 Cat. 6, 1 x HDMI

Alu



Type	Version	Pack Piece	Weight kg/100 pc.	Item no.
DB-MH1 MS2 SEA1	Housing, silver anodised	1	130.000	6116904

The Deskboxes can be mounted simply on a tabletop with 2 fastening vices, without damaging the tabletop. Mounting is possible on a tabletop with a thickness of 8 to 40 mm.

The DB Deskbox ensures a direct supply of the workplace with power, data and multimedia technology and is suitable for fixed attachment to a tabletop. The Deskbox is equipped with a connection cable, which runs out of the profile from below. The housing consists of an anodised, silver-coloured aluminium profile.

The Deskbox is equipped with two black British Multistandard sockets, which are equipped with a 3 m power cable with wire end sleeves at the end of the cable. In addition, one HDMI connection (HDMI 1.4 with a 3 m connection cable with HDMI connector) and two data technology modules (RJ45 to RJ45, switched 1:1, Cat. 6 shielded) are mounted.

Alu

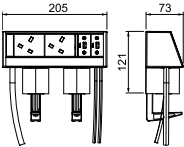
Deskbox DB, with fastening clamp, 2 BS sockets, 2 x USB (USB 3.0 Type A)

Type	Version	Pack Piece	Weight kg/100 pc.	Item no.
DB-MU1 BS SEA1	Housing, silver anodised	1	150.000	6116905

The Deskboxes can be mounted simply on a tabletop with 2 fastening vices, without damaging the tabletop. Mounting is possible on a tabletop with a thickness of 8 to 40 mm.

The DB Deskbox ensures a direct supply of the workplace with power, data and multimedia technology and is suitable for fixed attachment to a tabletop. The Deskbox is equipped with a connection cable, which runs out of the profile from below. The housing consists of an anodised, silver-coloured aluminium profile.

The Deskbox is equipped with two black British Standard sockets, which are equipped with a 3 m power cable with wire end sleeves at the end of the cable. In addition, two USB connections (USB 3.0, type A) are mounted, each with a 3 m connection cable with USB connector (type A).



Alu

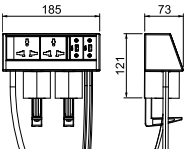
Deskbox DB, with fastening clamp, 2 MS sockets, 2 x (USB 3.0 Type A)

Type	Version	Pack Piece	Weight kg/100 pc.	Item no.
DB-MU1 MS SEA1	Housing, silver anodised	1	150.000	6116906

The Deskboxes can be mounted simply on a tabletop with 2 fastening vices, without damaging the tabletop. Mounting is possible on a tabletop with a thickness of 8 to 40 mm.

The DB Deskbox ensures a direct supply of the workplace with power, data and multimedia technology and is suitable for fixed attachment to a tabletop. The Deskbox is equipped with a connection cable, which runs out of the profile from below. The housing consists of an anodised, silver-coloured aluminium profile.

The Deskbox is equipped with two black British Multistandard sockets, which are equipped with a 3 m power cable with wire end sleeves at the end of the cable. In addition, two USB connections (USB 3.0, type A) are mounted, each with a 3 m connection cable with USB connector (type A).



Alu

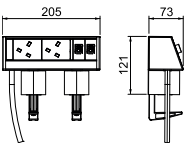
Deskbox DB, with fastening clamp, 2 BS sockets, 2 x RJ45 Cat. 6

Type	Version	Pack Piece	Weight kg/100 pc.	Item no.
DB-1 BS2 D SEA1	Housing, silver anodised	1	150.000	6116907

The Deskboxes can be mounted simply on a tabletop with 2 fastening vices, without damaging the tabletop. Mounting is possible on a tabletop with a thickness of 8 to 40 mm.

The DB Deskbox ensures a direct supply of the workplace with power, data and multimedia technology and is suitable for fixed attachment to a tabletop. The Deskbox is equipped with a connection cable, which runs out of the profile from below. The housing consists of an anodised, silver-coloured aluminium profile.

The Deskbox is equipped with two black British Standard sockets, which are equipped with a 3 m power cable with wire end sleeves at the end of the cable. In addition, two data technology modules (RJ45 to RJ45, switched 1:1, Cat. 6 shielded) are mounted.



Alu

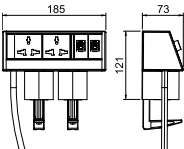
Deskbox DB, with fastening clamp, 2 MS sockets, 2 x RJ45 Cat. 6

Type	Version	Pack Piece	Weight kg/100 pc.	Item no.
DB-1 MS2 D SEA1	Housing, silver anodised	1	150.000	6116908

The Deskboxes can be mounted simply on a tabletop with 2 fastening vices, without damaging the tabletop. Mounting is possible on a table top with a thickness of 8 to 40 mm.

The DB Deskbox ensures a direct supply of the workplace with power, data and multimedia technology and is suitable for fixed attachment to a tabletop. The Deskbox is equipped with a connection cable, which runs out of the profile from below. The housing consists of an anodised, silver-coloured aluminium profile.

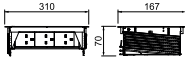
The Deskbox is equipped with two black British Multistandard sockets, which are equipped with a 3 m power cable with wire end sleeves at the end of the cable. In addition, two data technology modules (RJ45 to RJ45, switched 1:1, Cat. 6 shielded) are mounted.





Deskbox DBK, 3 BS sockets

VA



Type	Pack Piece	Weight kg/100 pc.	Item no.
DBK2-5 BS3 SEA1	1	278.000	6116845

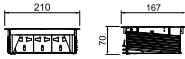
The Deskbox is permanently installed in a tabletop with a thickness of up to 50 mm. It is mounted in an installation opening of 295 x 157 mm.

The ready-for-connection, foldable DBK Deskbox ensures a direct supply of the workplace with power, data and multimedia technology. The Deskbox is equipped with a connection cable, which runs out of the profile from below. The visible surface is made of brushed stainless steel and equipped with a brush bar as a cable outlet.

The Deskbox is equipped with three black British Standard sockets, which are equipped with a 3 m power cable with wire end sleeves at the end of the cable.

Deskbox DBK, 3 MS sockets

VA



Type	Pack Piece	Weight kg/100 pc.	Item no.
DBK2-3 MS3 SEA1	1	274.000	6116846

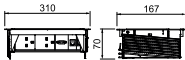
The Deskbox is permanently installed in a tabletop with a thickness of up to 50 mm. It is mounted in an installation opening of 195 x 157 mm.

The ready-for-connection, foldable DBK Deskbox ensures a direct supply of the workplace with power, data and multimedia technology. The Deskbox is equipped with a connection cable, which runs out of the profile from below. The visible surface is made of brushed stainless steel and equipped with a brush bar as a cable outlet.

The Deskbox is equipped with three black British Multistandard sockets, which are equipped with a 3 m power cable with wire end sleeves at the end of the cable.

Deskbox DBK, 2 BS sockets, 2 x RJ45 Cat. 6, 1 x HDMI

VA



Type	Pack Piece	Weight kg/100 pc.	Item no.
DBK2-MH5 BS SEA1	1	274.000	6116847

The Deskbox is permanently installed in a tabletop with a thickness of up to 50 mm. It is mounted in an installation opening of 295 x 157 mm.

The ready-for-connection, foldable DBK Deskbox ensures a direct supply of the workplace with power, data and multimedia technology. The Deskbox is equipped with a connection cable, which runs out of the profile from below. The visible surface is made of brushed stainless steel and equipped with a brush bar as a cable outlet.

The Deskbox is equipped with two black British Standard sockets, which are equipped with a 3 m power cable with wire end sleeves at the end of the cable. In addition, one HDMI connection (HDMI 1.4 with a 3 m connection cable with HDMI connector) and two data technology modules (RJ45 to RJ45, switched 1:1, Cat. 6 shielded) are mounted.

Deskbox DBK, 2 MS sockets, 2 x RJ45 Cat. 6, 1 x HDMI

VA



Type	Pack Piece	Weight kg/100 pc.	Item no.
DBK2-MH4 MS SEA1	1	274.000	6116848

The Deskbox is permanently installed in a tabletop with a thickness of up to 50 mm. It is mounted in an installation opening of 245 x 157 mm.

The ready-for-connection, foldable DBK Deskbox ensures a direct supply of the workplace with power, data and multimedia technology. The Deskbox is equipped with a connection cable, which runs out of the profile from below. The visible surface is made of brushed stainless steel and equipped with a brush bar as a cable outlet.

The Deskbox is equipped with two black British Multistandard sockets, which are equipped with a 3 m power cable with wire end sleeves at the end of the cable. In addition, one HDMI connection (HDMI 1.4 with a 3 m connection cable with HDMI connector) and two data technology modules (RJ45 to RJ45, switched 1:1, Cat. 6 shielded) are mounted.

VA

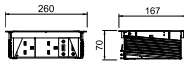
## Deskbox DBK, 2 BS sockets, 2 x USB (USB 3.0 Type A)

Type	Pack Piece	Weight kg/100 pc.	Item no.
DBK2-MU4 BS SEA1	1	150.000	6116849

The Deskbox is permanently installed in a tabletop with a thickness of up to 50 mm. It is mounted in an installation opening of 245 x 157 mm.

The ready-for-connection, foldable DBK Deskbox ensures a direct supply of the workplace with power, data and multimedia technology. The Deskbox is equipped with a connection cable, which runs out of the profile from below. The visible surface is made of brushed stainless steel and equipped with a brush bar as a cable outlet.

The Deskbox is equipped with two black British Standard sockets, which are equipped with a 3 m power cable with wire end sleeves at the end of the cable. In addition, two USB connections (USB 3.0, type A) are mounted, each with a 3 m connection cable with USB connector (type A).



VA

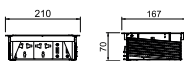
## Deskbox DBK, 2 MS sockets, 2 x USB (USB 3.0 Type A)

Type	Pack Piece	Weight kg/100 pc.	Item no.
DBK2-MU3 MS SEA1	1	140.000	6116850

The Deskbox is permanently installed in a tabletop with a thickness of up to 50 mm. It is mounted in an installation opening of 195 x 157 mm.

The ready-for-connection, foldable DBK Deskbox ensures a direct supply of the workplace with power, data and multimedia technology. The Deskbox is equipped with a connection cable, which runs out of the profile from below. The visible surface is made of brushed stainless steel and equipped with a brush bar as a cable outlet.

The Deskbox is equipped with two black British Multistandard sockets, which are equipped with a 3 m power cable with wire end sleeves at the end of the cable. In addition, two USB connections (USB 3.0, type A) are mounted, each with a 3 m connection cable with USB connector (type A).



VA

## Deskbox DBK, 2 BS sockets, 2 x RJ45 Cat. 6

Type	Pack Piece	Weight kg/100 pc.	Item no.
DBK2-4BS2 D SEA1	1	140.000	6116851

The Deskbox is permanently installed in a tabletop with a thickness of up to 50 mm. It is mounted in an installation opening of 245 x 157 mm.

The ready-for-connection, foldable DBK Deskbox ensures a direct supply of the workplace with power, data and multimedia technology. The Deskbox is equipped with a connection cable, which runs out of the profile from below. The visible surface is made of brushed stainless steel and equipped with a brush bar as a cable outlet.

The Deskbox is equipped with two black British Standard sockets, which are equipped with a 3 m power cable with wire end sleeves at the end of the cable. In addition, two data technology modules (RJ45 to RJ45, switched 1:1, Cat. 6 shielded) are mounted.



VA

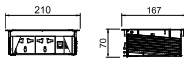
## Deskbox DBK, 2 MS sockets, 2 x RJ45 Cat. 6

Type	Pack Piece	Weight kg/100 pc.	Item no.
DBK2-3MS2 D SEA1	1	140.000	6116852

The Deskbox is permanently installed in a tabletop with a thickness of up to 50 mm. It is mounted in an installation opening of 195 x 157 mm.

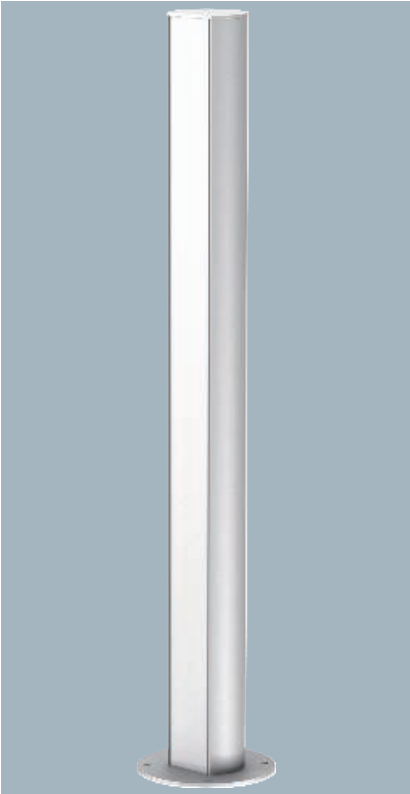
The ready-for-connection, foldable DBK Deskbox ensures a direct supply of the workplace with power, data and multimedia technology. The Deskbox is equipped with a connection cable, which runs out of the profile from below. The visible surface is made of brushed stainless steel and equipped with a brush bar as a cable outlet.

The Deskbox is equipped with two black British Multistandard sockets, which are equipped with a 3 m power cable with wire end sleeves at the end of the cable. In addition, two data technology modules (RJ45 to RJ45, switched 1:1, Cat. 6 shielded) are mounted.



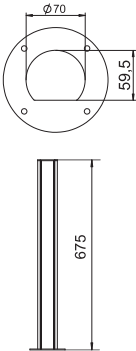


Service pole, type ISSRHSM45



Type	Colour	Surface	Number of compartments pc.	Pack Piece	Weight kg/100 pc.	Item no.
ISSRHSM45EL	—	Anodised	1	1	135.000	6290091
ISSRHSM45RW	Pure white	—	1	1	135.000	6290090

ISS aluminium service pole with a 45 mm system opening.  
Set consisting of:  
1 one-compartment pole with stand  
Total length: 675 mm  
1 aluminium cover  
Length: 675 mm  
The design of this ISS service pole is based on an extremely slender, round aluminium profile, which has a smooth cover of the Rapid 45 device installation trunking series on the front side. The 45 mm system opening is suitable for direct acceptance of Modul 45® switching and connection devices. The installation compartment is theoretically sufficient for 14 Modul 45® devices. If Modul 45connect® is used or in the case of cabling requiring a lot of space, the number of the max. installable devices is reduced. There is the option of installing a partition, type 2371/40 (6023096).



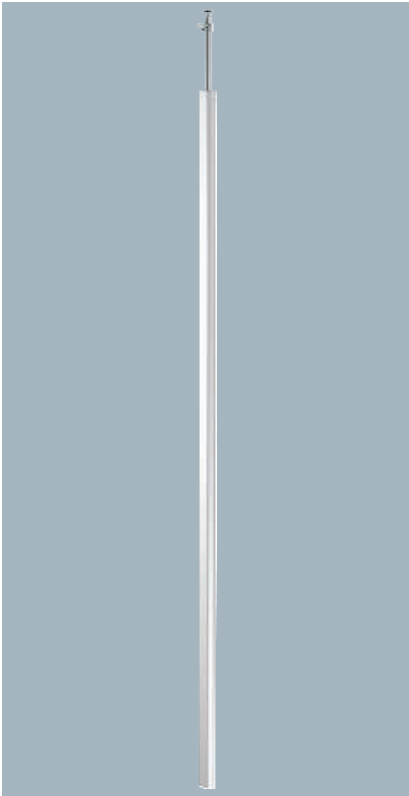
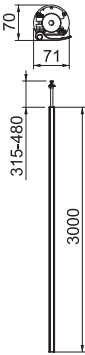
Alu EL



Service pole, type ISSRM45

Type	Colour	Surface	Length mm	Pack Piece	Weight kg/100 pc.	Item no.
ISSRM45EL	—	Anodised	3000	1	510.000	6290087

ISS aluminium service pole with a 45 mm system opening.  
Set consists of:  
1 one-compartment pole with clamping fastening  
Total length: 3,315 mm–3,480 mm  
1 ceiling attachment with clamping device  
1 aluminium cover  
Length: 3,000 mm  
The design of this ISS service pole is based on an extremely slender, round aluminium profile, which has a smooth cover of the Rapid 45 device installation trunking series as its front side. The 45 mm system opening is suitable for direct acceptance of Modul 45® switching and connection devices.



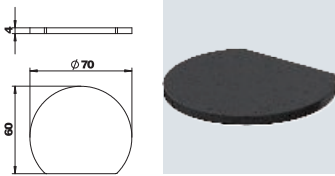
GUM



Rubber support for ISSRM45

Type	Colour	Pack Piece	Weight kg/100 pc.	Item no.
ISSRGU	Black	1	1.450	6290178

Rubber support for slip-free fastening of the floor-ceiling service pole ISSRM45.



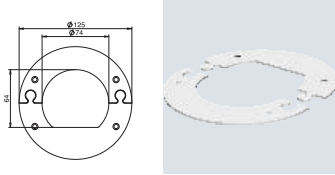
St



Ceiling panel for ISSRM45

Type	Colour	Pack Piece	Weight kg/100 pc.	Item no.
WAGRM45	Pure white	1	12.900	6290264

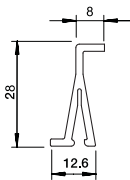
Closed ceiling rosette for tidy closure of the ceiling gland of the service poles, type ISSRM45.





Partition for WDK trunking, trunking height 40 mm

PVC



Type	Colour	Length		Pack	Weight		Item no.
		mm		m	kg/100 m		
2371 40	Light grey	2000		2	13.500		6023096

Partition to divide the WDK trunking, with 40 mm trunking height, and various ISS service poles for the installation of different voltage levels.

Broschuere Branche Hotel Gastronomie SG / en / 2022/11/17 14:30:24 (LLExpert\_03255) / 2022/11/17 14:30:44 14:30:44

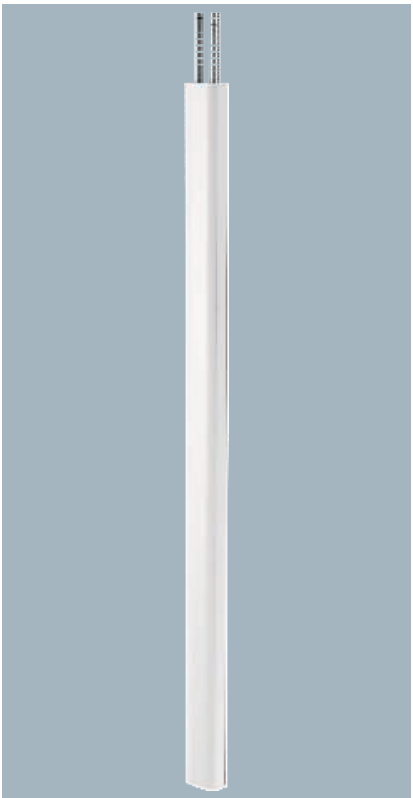
Alu EL



Service pole, type ISSDM45F

Type	Colour	Surface	Length mm	Pack Piece	Weight kg/100 pc.	Item no.
ISSDM45FEL	—	Anodised	2300	1	871.000	6289976

ISS aluminium service pole with a 45 mm system opening.  
Set consists of:  
1 two-compartment pole with 2 flexible hoses to the ceiling  
Total length of the aluminium profile: 2,300 mm  
2 aluminium covers, length: 2,300 mm  
The colours are either pure white or anodised. There are two 45 mm system openings on opposite sides for direct installation of Module 45® devices. The floor plate as a stand, type SFISSF, and the hose connection to the ceiling, type SAISSF, should be ordered separately (see articles below).



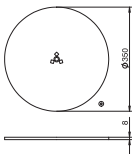
St



Stand

Type	Colour	Pack Piece	Weight kg/100 pc.	Item no.
SFISSF	White aluminium	1	600.000	6290197

Floor plate as stand for service poles with hose to ceiling, type ISS110100F, ISS140100F, ISSRM45F and ISSDM45F.



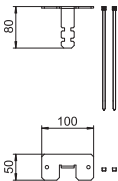
St



Hose connection

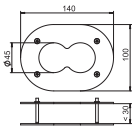
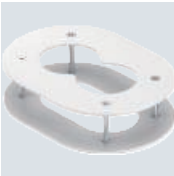
Type	Height mm	Pack Piece	Weight kg/100 pc.	Item no.
SAISSF	80	1	14.000	6290198

Hose connection as ceiling attachment for service poles with hose to ceiling, type ISS110100F, ISS140100F, ISSRM45F and ISSDM45F.





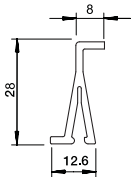
Ceiling panel



Type	Colour	Pack Piece	Weight kg/100 pc.	Item no.
DAB-2F	Pure white	1	27.100	6290382

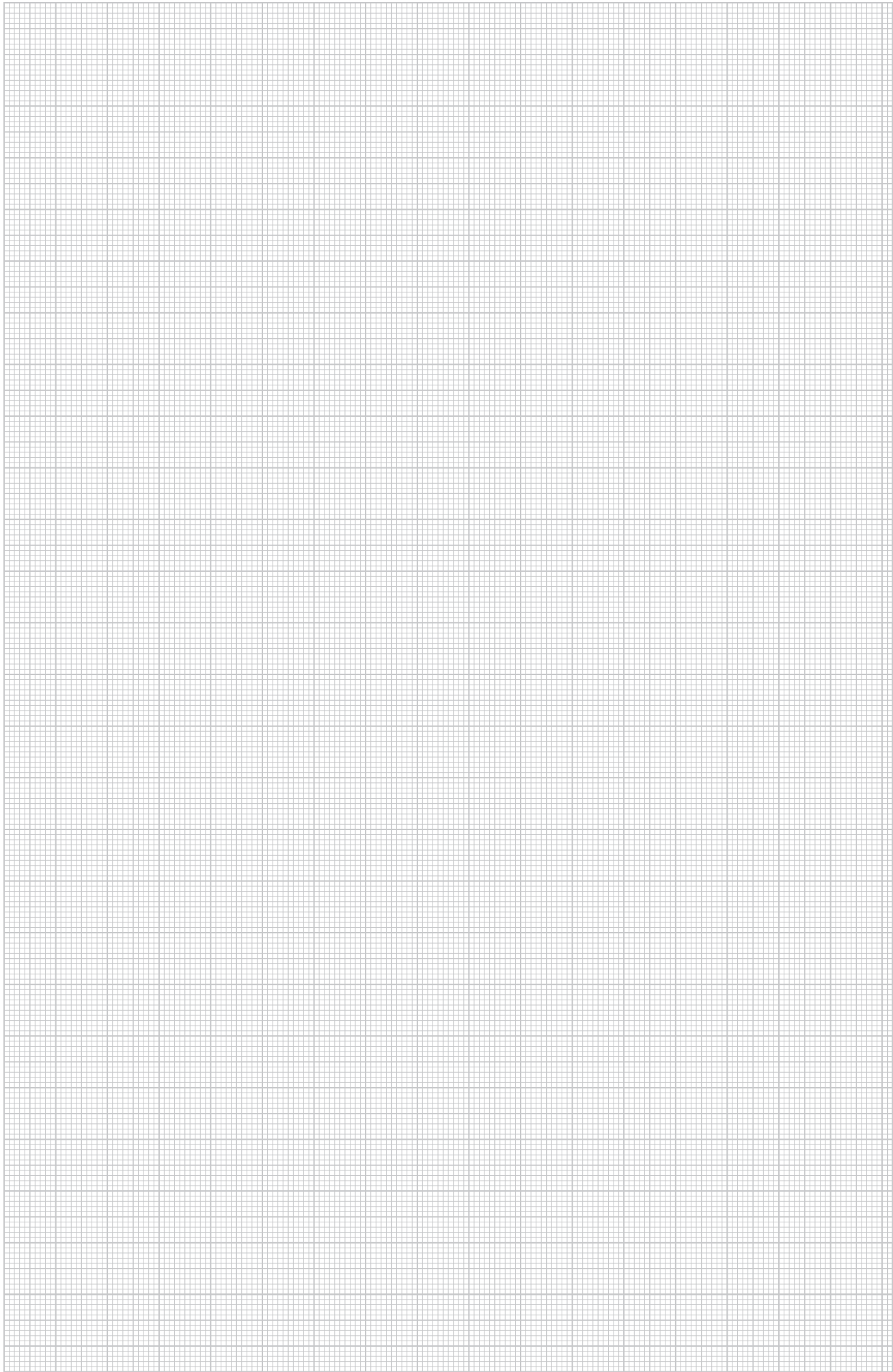
Ceiling rosette for tidy closure of the penetration of the flexible hoses in the ceiling.

Partition for WDK trunking, trunking height 40 mm



Type	Colour	Length mm	Pack m	Weight kg/100 m	Item no.
2371 40	Light grey	2000	2	13.500	6023096

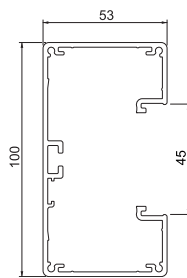
Partition to divide the WDK trunking, with 40 mm trunking height, and various ISS service poles for the installation of different voltage levels.





## Trunking height 53 mm, trunking width 100 mm

### Device installation trunking Rapid 45-2, trunking width 100, trunking height 53



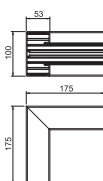
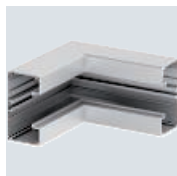
Type	Colour	Surface	Length mm	Pack m	Weight kg/100 m	Item no.
GA-53100EL	—	Anodised	2000	2	223.800	6112403

Aluminium device installation trunking complete with bottom and top part. The lower part is without base perforation.

**Note:**

For anodised device installation trunking and fittings made from aluminium, light colour differences caused by permitted scatter due to the material and process conditions cannot be avoided (according to DIN 17 611). The 45 mm devices can be clicked in directly. When using PC/ABS hood fittings, there may be colour differences due to the different materials.

### Internal corner, for device installation trunking Rapid 45-2 type GA-53100



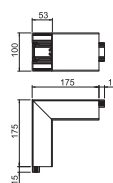
Type	Colour	Surface	Length mm	Pack Piece	Weight kg/100 pc.	Item no.
GA-IS53100EL	—	Anodised	175	1	69.200	6112433

Corner 90° aluminium for changing the direction of device installation trunking Rapid 45-2 GA...

**Note:**

For anodised device installation trunking and fittings made from aluminium, light colour differences caused by permitted scatter due to the material and process conditions cannot be avoided (according to DIN 17 611). The 45 mm devices can be clicked in directly. When using PC/ABS hood fittings, there may be colour differences due to the different materials.

### External corner, for device installation trunking Rapid 45-2 type GA-53100



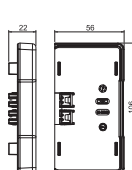
Type	Colour	Surface	Length mm	Pack Piece	Weight kg/100 pc.	Item no.
GA-AS53100EL	—	Anodised	175	1	84.100	6112423

External corner 90° aluminium for changing the direction of device installation trunking Rapid 45-2 GA...

**Note:**

For anodised device installation trunking and fittings made from aluminium, light colour differences caused by permitted scatter due to the material and process conditions cannot be avoided (according to DIN 17 611). The 45 mm devices can be clicked in directly. When using PC/ABS hood fittings, there may be colour differences due to the different materials.

### End piece, for Rapid 45-2 device installation trunking, type 53100



Type	Colour	Pack Piece	Weight kg/100 pc.	Item no.
GK-E53100AL	Aluminium	1	2.200	6113114

End piece for side closing of the Rapid 45-2 GK and GA 53100 device installation trunking.

Alu EL

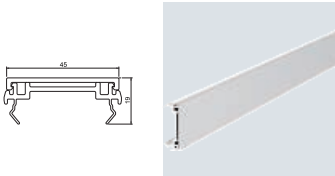


Cover, for device installation trunking Rapid 45-2

Type	Colour	Surface	Length mm	Pack m	Weight kg/100 m	Item no.
GA-OT45EL	—	Anodised	2000	2	47.450	6112413

Trunking cover for closing the device installation trunking of the Rapid 45-2 GA... series. The 2-piece cover consists of a PVC base profile and an aluminium panel profile.

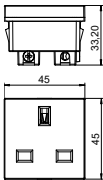
Note:  
For anodised aluminium trunking, covers and fittings, light colour differences caused by permitted scatter due to the material and process conditions cannot be avoided (according to DIN 17 611). The 45 mm devices can be clicked in directly. When using PC/ABS hood fittings, there may be colour differences due to the different materials.





0° socket, British Standard, single

PC

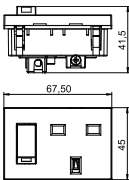


Type		Colour	Pack Piece	Weight kg/100 pc.	Item no.
STD-BS0 RW1		Pure white	1	4.000	6120722

Socket, single 0°, British Standard, conforms to BS 1363, with increased touch protection, with screw terminals, 2-pin, 13 A, 250 V~.

0° socket with switch, British Standard, single

PC

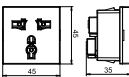


Type		Colour	Pack Piece	Weight kg/100 pc.	Item no.
STD-BS0G RW1.5		Pure white	1	6.000	6120724

Socket, single 0°, with switch, British Standard, conforms to BS 1363, with increased touch protection, with screw terminals, 2-pin, 13 A, 250 V~.

0° socket, Multistandard, single

PC



Type		Colour	Pack Piece	Weight kg/100 pc.	Item no.
STD-MS0 RW1		Pure white	1	4.000	6120738

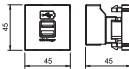
This socket may not be used in Europe. Country-specific standards and directives must be observed.

Socket, single 0°, multi-standard version, with increased touch protection, with screw terminals, 2-pin, 5/6/10/13 A, 250 V~.

USB charging device, Modul 45

USB charging device

PC



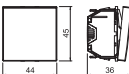
Type		Colour	Pack Piece	Weight kg/100 pc.	Item no.
MTG-2UC2.1 RW1		Pure white	1	6.162	6105300

USB charging device with two USB type A sockets, for charging 1–2 mobile devices, maximum charging current 1x 2,100 mA or 2x 1,050 mA.

Switching devices, Modul 45

One-way/changeover switch, 1 module

PC



Type		Colour	Pack Piece	Weight kg/100 pc.	Item no.
WS-UB RW1		Pure white	1	2.600	6120932

Changeover switch 1-pin, 10 A, 250 V~, with screwless terminals.

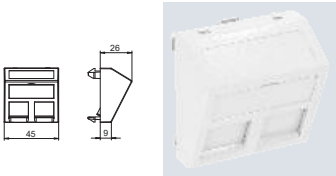
PC

Data technology support, 1 module, slanting outlet, type C

Colour		Pack Piece	Weight kg/100 pc.	Item no.
Type				
DTS-2C RW1	Pure white	1	1.500	6119250

The type C data technology support is suitable for accepting the following data connection modules: BTR (Keystone design): Cat. 6A module and UAE module; Corning: modules with Keystone seat; CobiNet: CobiDat KS module; Dätwyler: KS-T, KS-TS, MS-K and KU-T; EJU: E-Stone; Harting: Prelink Keystone Cat. 6A; Fixlink Keystone Cat. 6A; Komos: KDM 500 module; Leoni Kerpen: MegaLine-Connect45 Keystone socket modules; OBO: Type ASM-C6A and ASM-C6A G; R&M: Cat. 6A with Keystone fastening; Rutenbeck: UM and UMflex; SETEC: UKJ and XKJ; Telegärtner: AMJ and UMJ.

Data technology support with slanting outlet and locking slider to accept two data technology connection modules with RJ45 socket. The locking fastening is suitable for horizontal and vertical installation in the system environment. Type C has a mounting opening of 19.30 x 14.80 mm and is designed for direct fastening of the data connection modules in the mounting opening.

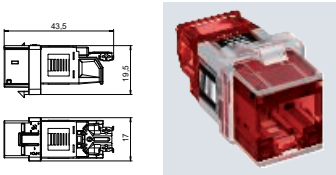


Covers

Connection module Cat. 6A, unshielded, keystone

Colour		Pack Piece	Weight kg/100 pc.	Item no.
Type				
ASM-C6A		1	1.050	6117348

Connection module Cat. 6A (ISO) unshielded, with an RJ45 slot. Including a dust cover, a cable tie, a Keystone fastening frame and mounting instructions. Suitable for installation in the data technology supports of type DTG-2C and DTS-2C, support plate of type MTM 2C and MTM 3C, mounting plate of type MPR2 2C, mounting supports of type MTGE2 2C, MTGE2 15 2C and MTGE2 F 2C.



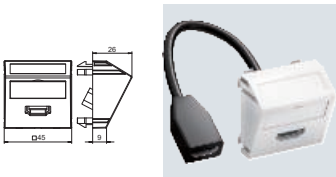
Digital connection solutions

PC

HDMI connection, 1 module, slanting outlet, with connection cable

Colour		Pack Piece	Weight kg/100 pc.	Item no.
Type				
MTS-HD F RW1	Pure white	1	6.200	6104838

Multimedia support with one HDMI connection socket, slanting cable outlet, with labelling panel, short HDMI connection cable, socket-socket version. Support plate with locking fastening, suitable for horizontal and vertical installation in the system environment.



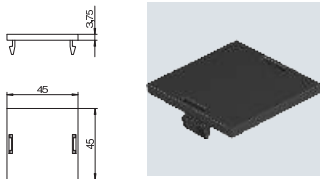
Accessories

PA

Blanking cover for Modul 45® installation opening

Colour		Pack Piece	Weight kg/100 pc.	Item no.
Type				
LP 45		10	0.424	7407584

Blanking cover for closing off a square Modul 45 mounting opening in a mounting box cover plate.





**OBO Bettermann South East Asia Pte. Ltd.**  
320 Serangoon Road / #09-13 Centrium Square  
218108 Singapore  
SINGAPORE (HUB APAC)

**Customer Service Singapore:**  
Office: +65 6385 5805  
[customerservice@obo.sg](mailto:customerservice@obo.sg)

[www.obo-bettermann.com.sg](http://www.obo-bettermann.com.sg)

---

**Building Connections**

